

ASTM D2887 – Boiling Distribution of Petroleum Fractions

Analyzer Description

Configuration:

Cool-on-column or multi-mode inlet, FID, SimDis Software

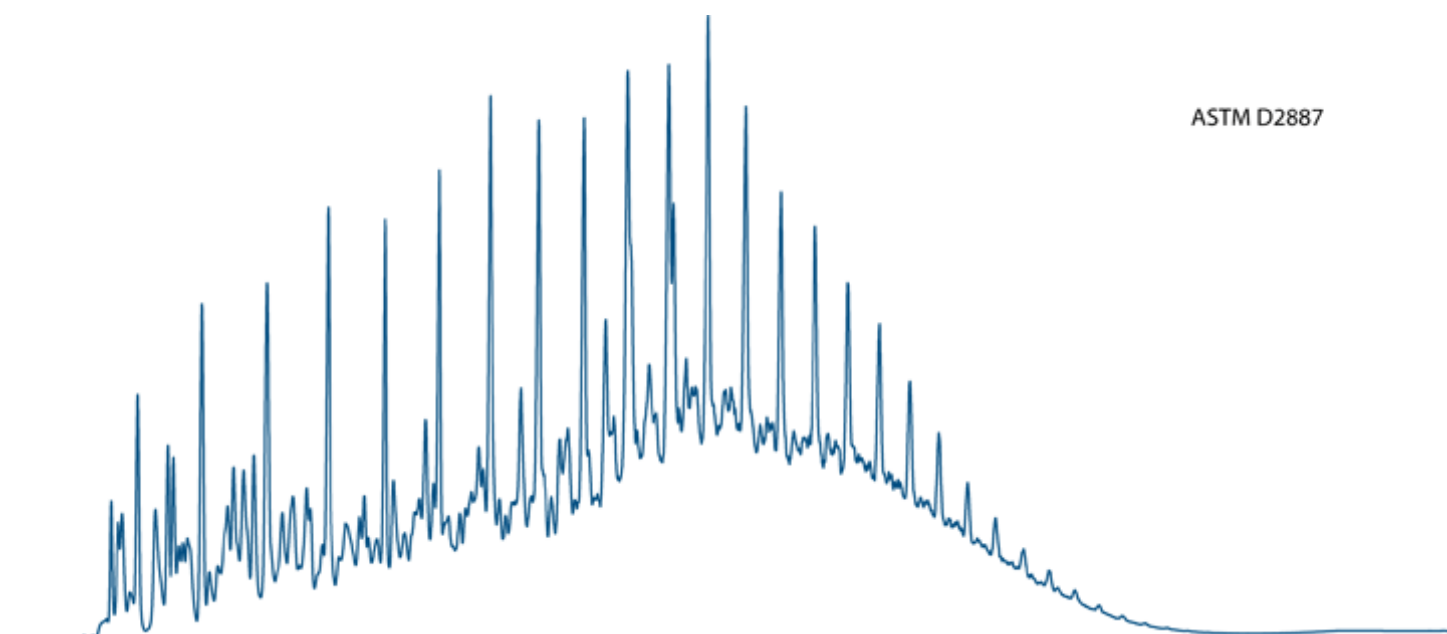
Sample type:

Jet fuel, diesel, petroleum fraction with boiling range from 55°C to 538°C

Methods met:

ASTM D2887, Wasson-ECE 860

Typical Chromatogram



Key Features and Benefits

- Easy-to-use software which can be customized to the lab's requirements
- Can be combined with other simulated distillation methods on the same instrument