

ASTM D3606 – Analysis of Benzene and Toluene in Gasoline

Analyzer Description

Configuration:

1-valve, 2-column (capillary), TCD

Sample type:

Finished motor and aviation gasoline

Components separated:

Benzene, toluene

Concentration range:

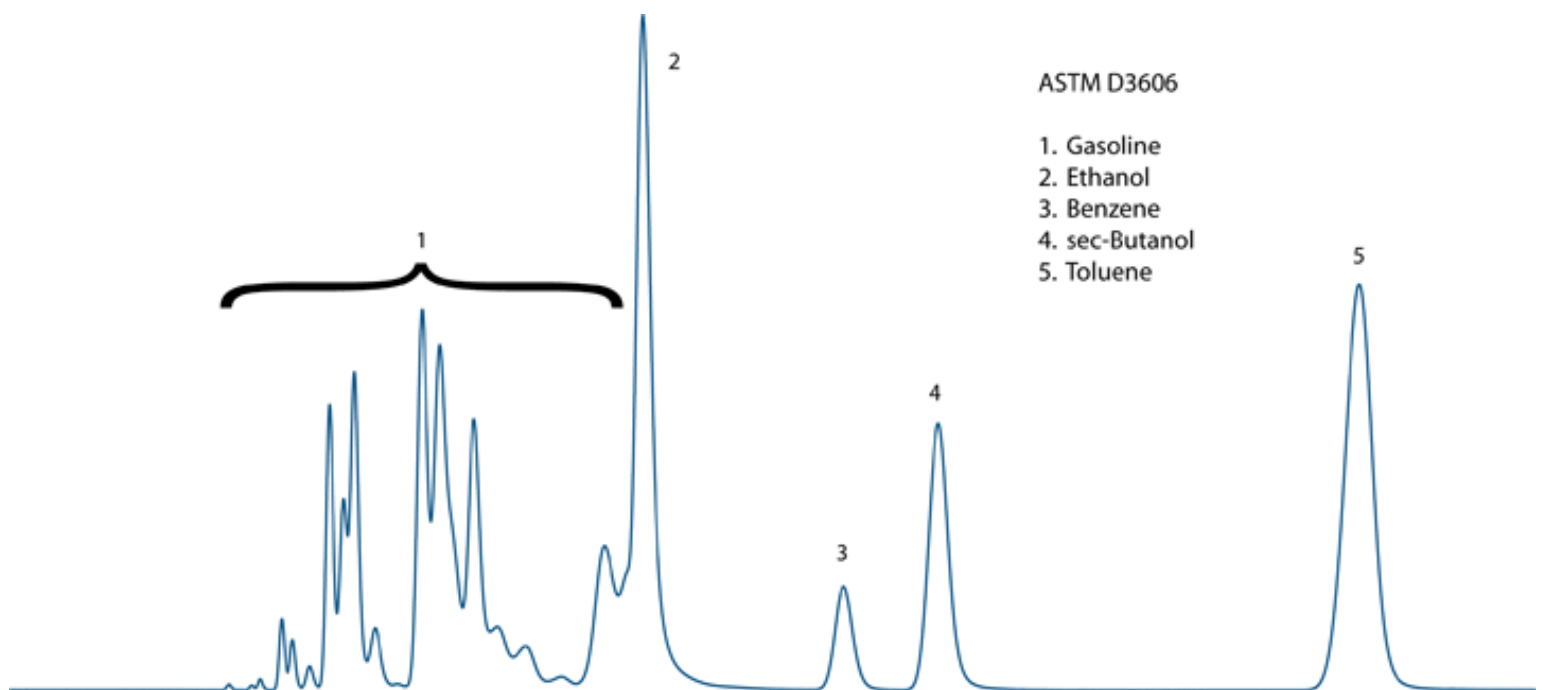
0.1 to 5 vol% for benzene

2 to 20 vol% for toluene

Methods met:

ASTM D3606, Wasson-ECE 159

Typical Chromatogram



Key Features and Benefits

- Single channel with dual column system is used to determine benzene and toluene in finished motor and aviation gasoline
- Can be modified for the presence of ethanol