

ASTM D3257 – Analysis of Aromatics in Mineral Spirits

Analyzer Description

Configuration:

FID, auto-injector, 1-capillary column

Sample type:

Mineral spirits

Compounds Separated:

Hexane, n-tridecane, toluene, *p*-xylene, cumene, pseudocumene, durene, cyclohexanone, C₈+ aromatics, total aromatics

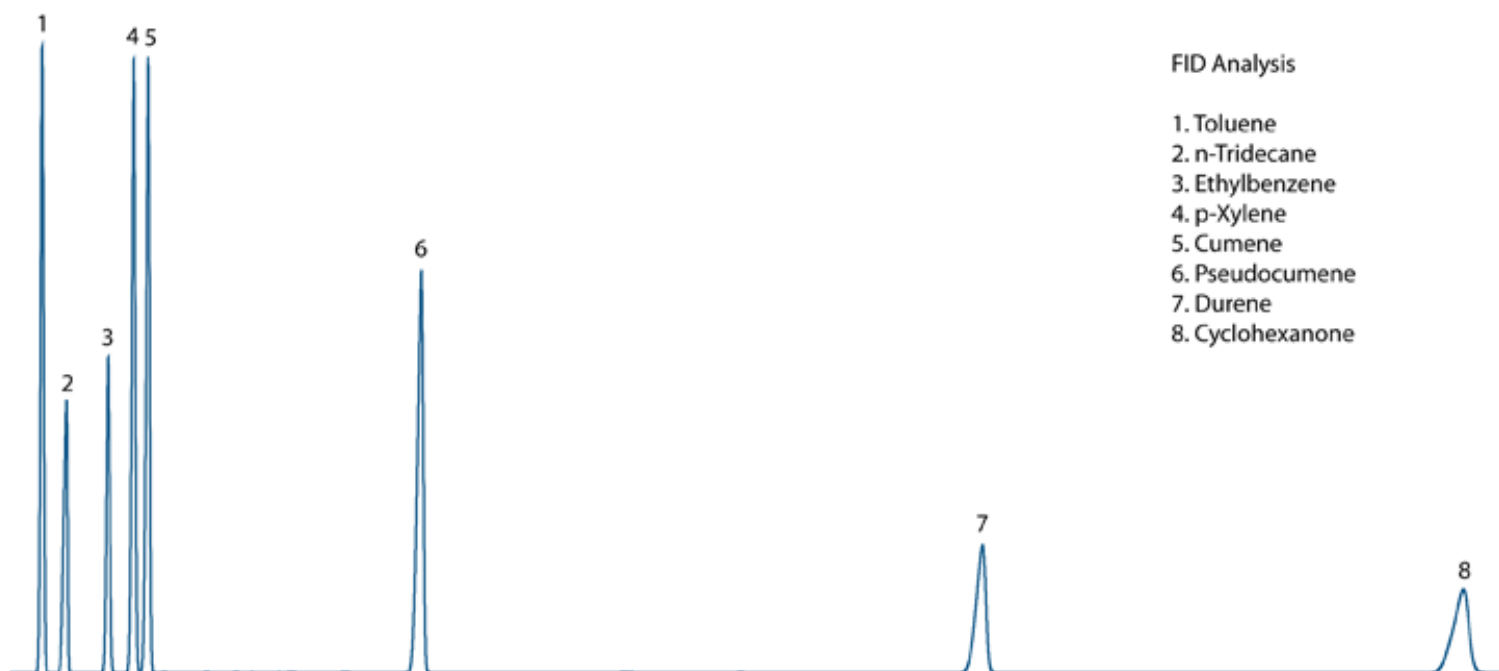
Concentration Range:

0.1 to 30 vol%

Methods met:

ASTM D3257, Wasson-ECE W4452

Typical Chromatogram



Key Features and Benefits

- Approximately a 20 minute analysis time.