

## ASTM D1945 – Natural Gas Analysis

### Analyzer Description

**Configuration:**

3-valve, 4-column (packed), TCD

**Sample type:**

Natural gas

**Components separated:**

Isobutane, n-butane, isopentane, n-pentane, carbon dioxide, ethane, hydrogen sulfide, n-propane, argon/oxygen composite, nitrogen, methane

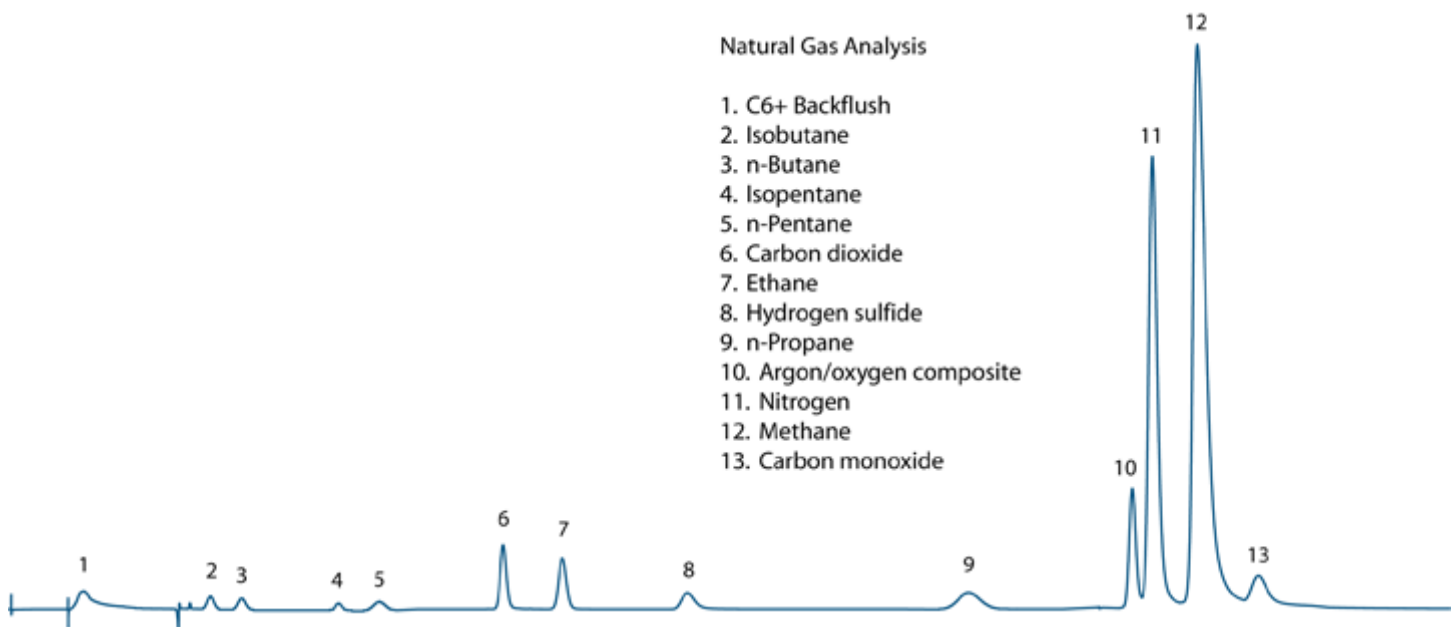
**Lower detection limits:**

100 ppm for most components, 400 ppm for propane, 500 ppm for hydrogen sulfide

**Methods met:**

ASTM D1945, Wasson-ECE 192

### Typical Chromatogram



### Key Features and Benefits

- An additional TCD and valve may be added for helium and hydrogen analysis